

152 WEST 25TH STREET

5,200 RSF PLUS BASEMENT

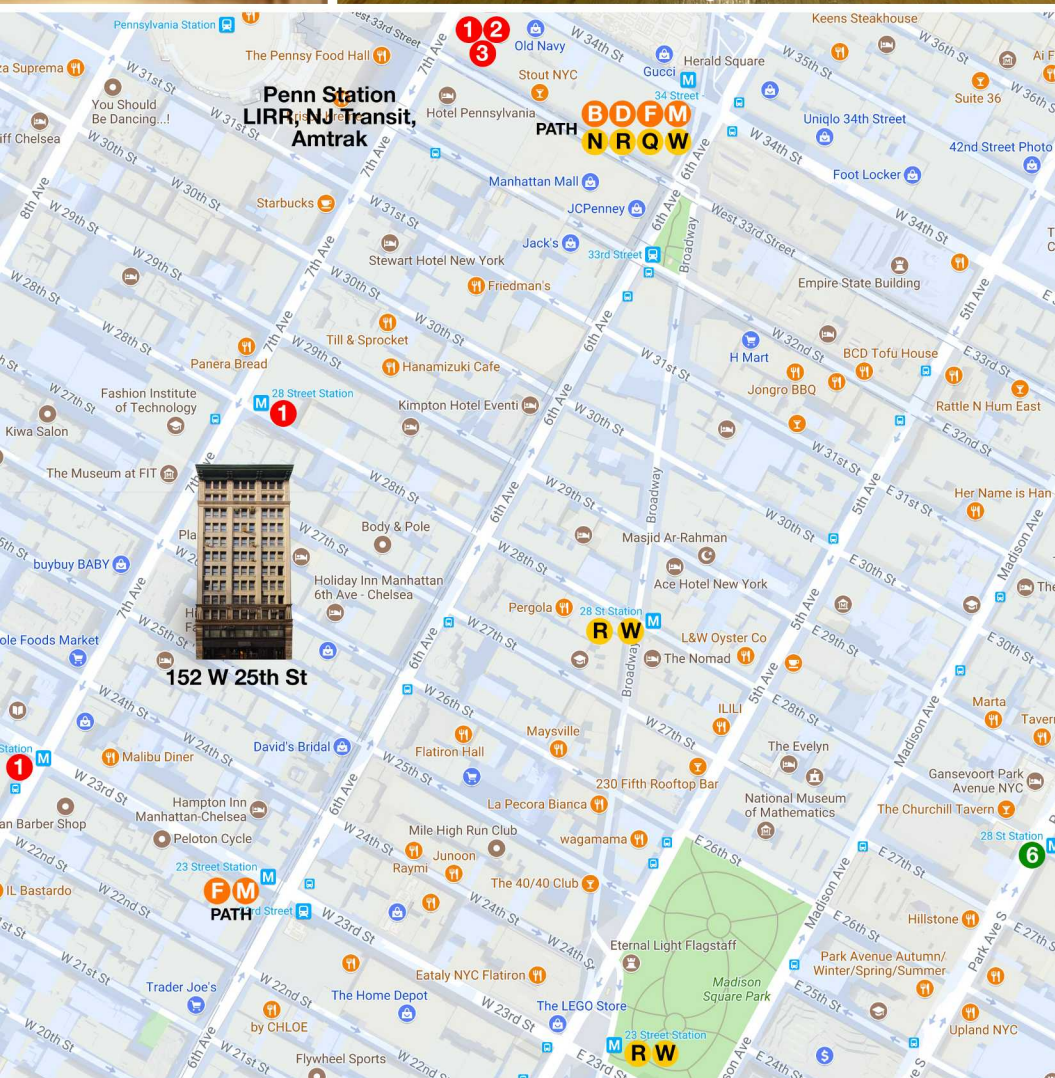
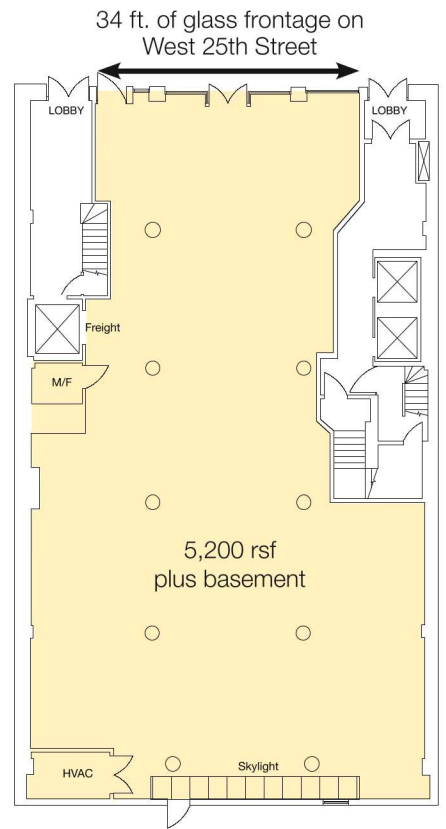
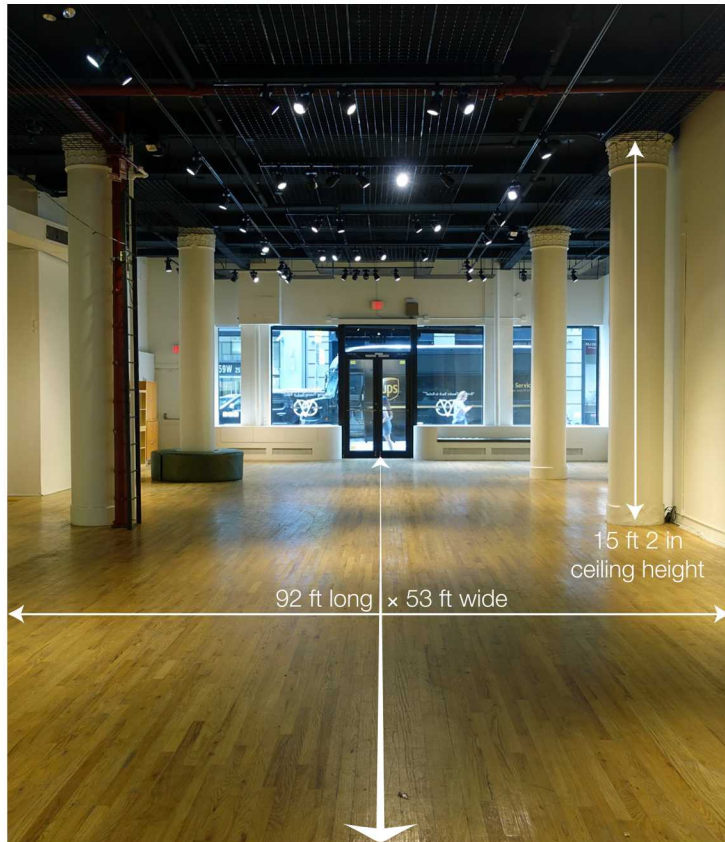
HIGH-END RETAIL OPPORTUNITY

IN THE HEART OF

THE CHELSEA DISTRICT



Koeppl Rosen LLC



AREA HIGHLIGHTS

- High traffic area near hotels, shopping, Whole Foods, FIT, Penn Station, and Ladies' Mile Historic District
- F, M, R, W, 1, and PATH trains conveniently located nearby
- Perfect for fashion, home decor, technology, high end restaurant

TERMS UPON REQUEST IMMEDIATE POSSESSION

David J. Koepfel
Principal
212-249-1550 ext. 216
dkoepfel@koepfelrosen.com

Max P. Koepfel
Associate
212-249-1550 ext. 210
mkoepfel@koepfelrosen.com

www.koepfelrosen.com



Koepfel Rosen LLC